

Visiting the Exhibition

The exhibition will be open to the public from Monday 20th February to Saturday 8th April.

Admission is free

Opening times are:

- Mondays, Wednesdays and Fridays: 11am – 4pm

- Tuesdays, Thursdays and Saturdays: 11am – 6pm

- And for an extra hour before the evening talks.

Refreshments will be served on Saturdays and at 7pm before the Lent Conversations evening talks.

The exhibition of school student artwork will be open in the undercroft hall at Victoria MC.

Guided groups of school students are welcome—by contacting

vicmethevents@gmail.com

Other group visits can also be arranged in advance.

Churches Together in Clifton, Cotham & Redland bring you a series of talks based at Victoria Methodist Church and explore the 'Articles of Faith' exhibition of the Methodist Modern Art Collection.

The exhibition and all talks are at Victoria Methodist Church, 1A White ladies Rd BS8 1NU (next to the RWA) unless stated.



For booking information, exhibition opening times and other events see: -

- [www.facebook.com/](https://www.facebook.com/VicMethodistArticlesOfFaith)

[VicMethodistArticlesOfFaith](https://www.facebook.com/VicMethodistArticlesOfFaith)

- www.methodist.org.uk/artcollection

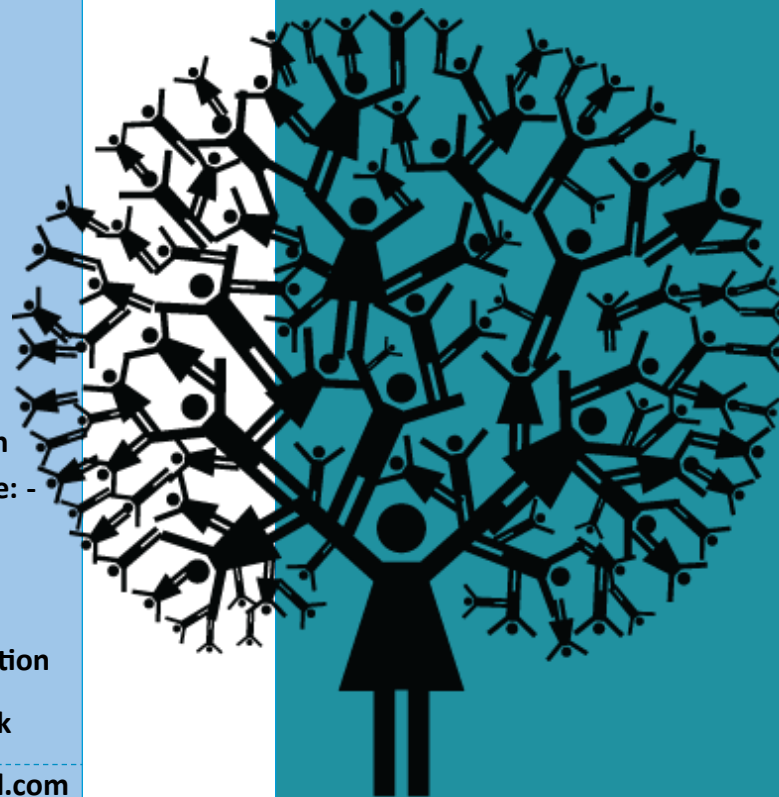
- www.vic-methodist-bristol.org.uk

Or email: lentconversations@gmail.com

And - Eventbrite - search events for Bristol in Lent

LENT CONVERSATIONS 2023

Faith and Art Today!



*In association with the
'Articles of Faith' Exhibition at
Victoria Methodist Church*

Tuesday 28th Feb at 7.30pm

Sarah Middleton

The Methodist Modern Art Collection - discovering Jesus

Sarah shares how this treasure of the contemporary art world was established and came to be owned and developed by the British Methodist Church.

Tuesday 7th March 7.30pm

Alison McTier

Finding Rest and Refreshment at the Well

How and why is an icon made? The Director of the Retreat Association leads us in a reflective session focussing on their recently commissioned Icon, illustrating the Gospel passage of the encounter of Jesus and the Samaritan Woman at the well.

Wednesday 15th March 7.30pm

**at Royal West of England Academy (RWA)*

Alison Bevan

Art and Faith in the West of England, 1880-2020 - from the Newlyn School to the present day

Director of the RWA and expert on the Newlyn School of artists, Alison explores the relationship between art and faith in our region.



Final talk

Tuesday 28 th March 7.30pm

One life, several (interlocking) careers: Clive Hicks-Jenkins in conversation with Rebecca Gibbs.

Clive's arresting artwork 'Christ writes in the dust' features in the exhibition. Simon Callow has called Clive "one of the most individual and complete artists of our time". He talks to Rebecca from the Collection's Management Committee.

Unique Opportunity

From **20th February to 8th April 2023** thirty paintings from the Methodist Modern Art Collection will be exhibited in Bristol along with artefacts from various faith traditions.

The exhibition includes works by Graham Sutherland, Elisabeth Frink, Ceri Richards, Maggi Hambling and many other renowned artists.

Entitled '**Articles of Faith – Where our paths meet**' the exhibition will explore themes that resonate with all faiths and none.

The themes are: **compassion and service, hope, hospitality, justice and peace, life and death, relationship and mystery, suffering, and text and story.**