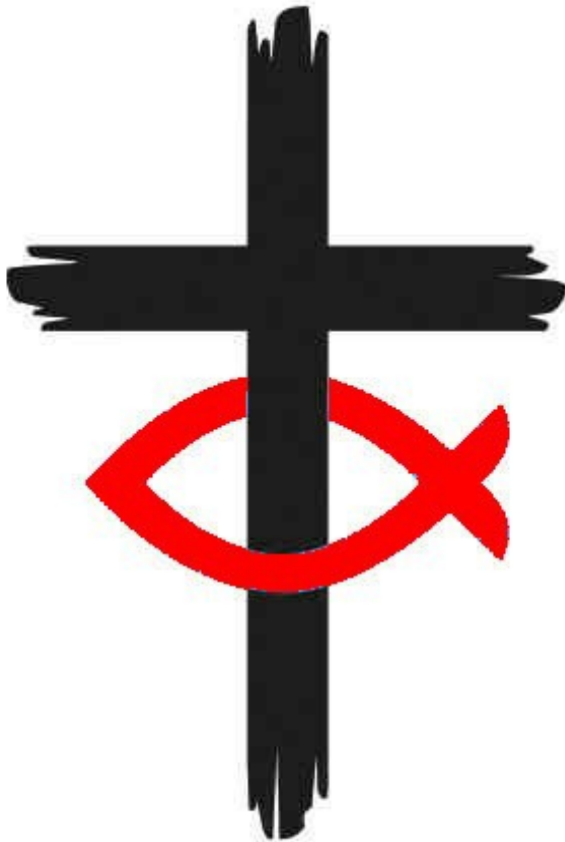


ESTD 1901

The Recorder

December '24 and January '25

News and views from Redland Park &
New Brunswick United Reformed Churches



Vestry Vibes by Dougie Burnett

Dear friends,

The Christian year always runs from Advent through Lent, Easter, Pentecost and then finally ends with the Feast of Christ the King. That is the Sunday before Advent. The readings that we finish with in the year, and the readings that we begin with in Advent, always sound a little bit on the scary side. Typically, they deal with the coming of God and images of judgement etc. It always seems so much better when we finally get onto the Christmas readings and the child born in the manger. To be honest, it makes my life so much easier as the minister when I have to preach of those Christmas stories rather than those more scary stories. Junior Church leaders would very much agree with that.



Yet, those more scary texts also present us with something of how the world can be. The world can be at some distance from God. If we think that it was in October of last year when Hamas attacked southern areas of Israel and took those hostages. We have been horrified by the violence that has happened since then. The U.S. presidential elections will have done little to moderate our anxieties. Yet, when we have such anxieties then it can make those scary texts from the gospels all the more real. They deal with the world as it can be, yet also remind us to always place God into the equation. It is God in these stories that means that they still convey good news, and that there is reason to hope. At times that can seem like a futile thing to do. Yet, our faith tradition would also say that it is the most real and profound thing that we can do. Since the time of Plato there have been writings about utopia. The thing is that, as we know, utopia doesn't exist. But there is this realm called the Kingdom of God. It is that around which so much of history has revolved. It is this that enables us to get out of bed in the morning and hope. Over the past few years I have wondered about sending our Christmas cards, as postage gets more and more expensive. But then I also think of the joy that receiving a

card can bring about. I think that this year that bit of joy, and that message of peace, might be even more needed.

There is enough scary stuff in the world. We all need a reminder that there is something more than just that.

Happy Christmas!

Dougie

Pause for thought

Each month for the last year I have been reporting on the number of people killed in Gaza by the Israeli Defence Force (IDF). Apart from the bare numbers I've shown this as a percentage of the population of Gaza and worked out what that would mean as an equivalent percentage in the UK. The numbers are horrifying.

I'm going to stop doing that now. Not because the killing has stopped, but because there is the risk of thinking, "Oh it's that bit again" and moving on. And because I can think of no way of also comparing the numbers of Lebanese now being killed in their own country by the IDF, the increased number of people killed in the West Bank, the number of refugee camps and shelters bombed, the number of hospitals, universities and schools destroyed in Gaza, and the continuing restriction by Israel of food and medical aid being brought into Gaza. And that we as a country are complicit as we sell components for aircraft and communications to the IDF.

I would reiterate two points from the first article last November. What Hamas did on 7th October 2023 was utterly wrong. And that there is a huge difference between anti-semitism and being anti-what-the-state-of-Israel is doing. What the IDF is doing is utterly wrong. Israel is heedlessly violating the rules of the Torah, keystone of the Jewish faith, and we are all, but most seriously the Gazans, suffering.



An IDF spokesperson said, "The IDF is precisely operating and is doing everything possible to avoid causing harm to civilians."

Worship details

... at Redland Park

Sunday morning worship is at 10.30 a.m. (at Redland Park and on Zoom)

See extra panel about all the Christmas services.

- December 1st Rev Dougie Burnett, including Communion
- 8th Rev Dougie Burnett
- 15th Worship led by the Elders
- Lessons and Carols, shared with BKC and ZRC **at 4 p.m.**
- 22nd Junior church celebration
- Tue 24th Crib service in church at 4 p.m.**
- Wed 25th Christmas Day worship **at Tyndale Baptist church at 10 a.m.**
- 29th Joint Whiteladies Rd churches worship **at Tyndale Baptist church at 10.30 a.m.**
- January 5th Angus Gregson, including Communion
- 12th Rev Dougie Burnett
- 19th Rev Dougie Burnett
- 26th Rev Rachel Haig

Zoom log in: 732 001 8996 passcode 8cC7Zv

Sunday evening worship at 7 p.m. via Zoom

December 8th and January 12th & 26th

Zoom log in: 815 4053 7777 passcode 087103

Cell groups – both via Zoom

Mondays at 8 p.m.

Tuesdays at 7.30 p.m.

For both, the Zoom log in is: 732 001 8996 passcode 8cC7Zv

... and at New Brunswick

December	1 st	Barb Kirby
	8 th	Angus Gregson, including Communion
	15 th	Christmas Gift service, led by Brenda Drake
	22 nd	Christingle service, led by Kate Wintle
Weds	25 th	Christmas Day worship - starting at 10 a.m.
	29 th	Rick Kirby
January	5 th	Sue Thorne
	12 th	Angus Gregson, including Communion
	19 th	<i>to be advised</i>
	26 th	Rev Dougie Burnett



Other dates...

... at Redland Park

- December Wed 4th Organ group meeting at 9.30 a.m.
Wed 4th Elders' meeting at 7.30 p.m.
Thu 5th Warmshare in the front vestibule from 10.30 a.m. to 1.30 p.m. This will carry on every Thursday.
Sat 14th Organ treat with Andrew Kirk at 10.30 a.m.
- January Wed 8th Elders' meeting at 7.30 p.m.
Sat 18th Organ treat with Nigel Nash at 10.30 a.m.
Sun 19th Church meeting at 12 noon.

... at New Brunswick

- December Tue 3rd Joint Churches prayer meeting. This month at the Pentecostal Church at 7.30 p.m.
Thu 5th Church meeting at 7.30 p.m.
Sat 14th Craft and Preloved Fair at Greenway Centre 12-3 p.m. The next of these events will be in February.
Mon 16th Bible study and prayer followed by cake at 7.30 p.m. This month's bit of Ephesians is chapter 5:21-33
Sat 21st Carol Singing at Arnside. We'll meet at the Pentecostal Church at 10.30 a.m. Then moving to the shops for 11 a.m.
- January Tue 7th Joint churches prayer meeting. Hosted this month by St Stephens at 7.30 p.m.
Mon 20th Bible study and prayer evening and cake at 7.30 p.m. Into the last chapter of Ephesians: ch. 6:1-9
Fri 24th First Southmead Quiz of 2025 at 7 p.m.

People newsfrom New Brunswick

from Brenda Drake

We are pleased to learn that after many months in the BRI **Jen S** has now been discharged. Because of housing problems, at the time of writing this Jen is staying in a local hotel near Cribbs Causeway. She is grateful for the great job that the hotel staff are doing to make her feel welcome and the care they are giving her. We continue to pray for a more permanent housing situation for her.

Our prayers are very much with **Paul** and his family as his health is giving much cause for concern. We pray for God's peace in Paul's life. Asking God, too, for His care and peace for the rest of the family.

Again we call upon God for His healing for **Elaine** whose MS has flared up again, meaning that she has been unable to share with us on Sunday mornings. We pray that it won't be too long before Elaine is able to worship with us again on a Sunday.

Our thoughts are with **Carol H** and her wider family, several of whom are waiting for tests and others who are waiting for results. We pray that whilst they wait they will feel the presence of Jesus near. May Carol too be assured of our prayers and support.

It has now been confirmed that **Margaret B** has now moved into Trymview Hall. We trust she will soon feel settled.

As we approach the Festive Season we uphold to God all those for whom Christmas will be very different this year, for all sorts of reasons. Perhaps they have had to move into a new home, because they need a little more help with everyday tasks. We all know (I am sure) a family who have been touched by sadness in losing a very dear family member and for them. Christmas will never be the same again. Then there are those people whose lives have changed as a result of health issues. Whatever the reason, we pray that God will grant them peace in their hearts and that their memories of past years will bring them comfort.

May all those who read this magazine, either near or far, feel blessed at the Christmastime and the coming year.

CELEBRATIONS!

1st January Margaret B.

Congratulations to all those who will be celebrating a birthday or anniversary over the next couple of months.

...and from Redland Park

from Carol Fry

We pray for **Terry King** who is spending some time in hospital for assessment and will shortly be moving into care; we think of **Sally** as well, who has been caring for him for a while, and pray for them both.

We think of **Peter and Anna Ambrose**, both with ongoing health issues, and of **Suzie Atkins** who is also undergoing hospital treatment; we pray for a successful outcome. **Jane Beazer**, Suzie's mum, is suffering from a bug which is delaying her ongoing treatment; we pray for a speedy recovery.

David Hayden is also having health problems so neither he nor **Viv** are able to come to church at present; we pray for better health for both.

Jane Rogers has been undergoing tests and treatment too, and we pray for her health and successful treatment.

There are other members and friends with health issues at present and we pray for them all, and for those of our friends in nursing homes or care homes and unable to come to church; we are blessed with technically-able people who host our services on zoom.

It was good to see **Wendy and Brian Day** back in church again after Wendy was housebound for a while; we hope for a full recovery.

Michael Kearley too is now back at home and recovering after his operation and hospital stay.

A note from Audrey Bryant

I am living now in Westbury Nursing Home, Falcondale Road. (*Ed: sorry - it was wrong in November's Recorder.*) Some years ago this was a government building, but it is now a very light, airy nursing home set in a very large garden and as I am on the first floor I have a green outlook, but it's of trees (and squirrels!) not grass! It is a very pleasant room and it is surprising that the building is so near the main road.

It is my back which is the problem, meaning walking is difficult so it is very frustrating not being able to move without someone being there. Pain is very well controlled and at the moment I still have most of my marbles! My iPad - which is a bit temperamental (but that maybe operator trouble!) - books and visitors keep me going! I do appreciate so much all the thoughts and prayers of friends in the church - and visits.

What's been happening and going to happen?

The “Organ Treats” Concerts started in January 2024 and by the end of the year there will have been 9 concerts. Thanks to the organists who agreed to play, we have heard some wonderful music and they have demonstrated what a fine instrument we have at Redland Park. The result is that we have had between 60 and 90 people on Saturdays for the concerts.



The final Concert in 2024 is on **December 14th** and **Andrew Kirk** is playing. We are very fortunate that Andrew is playing. He is a superb organist and to hear him playing the RP organ will be a Christmas Treat.

The “Organ Treats” series continues unto 2025 using the same format with cakes and Tea or Coffee at 10:30 a.m. before the Organ music which starts at 11:00 a.m. for about 45 minutes. The dates we've arranged are:

January 18 th	Nigel Nash
February 15 th	Jonathan Price
March 22 nd	Peter Clements
May 24 th	John Talbot

Please make a note of these dates and make an effort to attend.

There is another project using the RP organ. Paul Walton, the Assistant Organist at the Cathedral and the University Organist is to play a series of six concerts in 2025. This is likely to be a spectacular series, because Paul plans to play all the Organ Symphonies by Louis Vierne (1870-1937). These are marvellous pieces of music, full of variety with moments of repose and moments of excitement. They require a superb player and a well-resourced organ.

These concerts will start at **1:00 p.m.** on **Tuesdays**,

January 28th, February 4th, 11th, 25th, March 4th and 11th .

There will be a retiring collection. We encourage you to attend – it is a great opportunity for Redland Park.

NB & RP held their version of **Tear Fund's**

Big Quiz Night

on November 15th. Congratulations to Myra & Derek Jones for edging ahead by the end. Their prize is ... this mention. But everyone who took part got a warm glow from knowing they were doing something good to help Tear Fund's work.



Even the Quizmaster learned something - what I'd always thought was a hedged**dog** in St Werburghs is actually a hedge**pig**. (Thank you, the Grands.)

I have to say I thought the turnout was a bit disappointing, but the generosity of the people that took part was amazing. Between us we've raised £395 (including Gift Aid) for Tear Fund. A special big thank you to NB who contributed the donations from their November Church lunch.

Nationally we were part of 11 019 people who took part from 258 churches (that's an average of 43 per church - 2½ times what we managed between us) who have given £57 448 on the night for Tear Fund's work.

If you'd like to see a couple of short videos about Tear Fund's work (and for all of you who took part, these are different videos from the one we watched on 15th) you can see an example of TF's work in South Sudan at

<https://vimeo.com/1007957013/71eb92a9e5>

If you're reading this online, just click on the link above, or use your phone's camera to scan the QR code →



This is one example of Tear Fund's *Transforming Communities* programme. If you'd like to know more watch the short video at

<https://vimeo.com/1007956825/d142954b2b>

or scan this code →

Back in September we had a Lectionary focus on the letter from James (remember?). This is it in action!



But it also seems to me to be a very real challenge to our two churches. How is God calling **us, RP and NB, here and now**, to transform *our* communities? What can we bring?

Redland Park Church Charities

It was decided to support just one charity for one year, rather than two for two years at a time, and nominations were requested for a charity of your choice, to be chosen at the November church meeting. Originally, it was suggested to have an overseas charity for 2025, with a local one being chosen for 2026, but nominations include both local and overseas, so whichever one is chosen this year, we will choose the alternative for 2026. There were ten nominations for church charity for 2025, and some of the members present at the church meeting wanted to consider these before making a decision; the result will be announced shortly.

Bristol churches shelter

The Bristol Churches Shelter started on Monday 4th November and will continue until the end of March 2025. There are nine rooms in a small hotel in Bedminster, and these are all now filled. All the guests are helped to find more permanent accommodation, and work if they are not already working. The co-ordinator and two empowerment workers support three guests each at a time, and they are encouraged to move on with their lives, and then other homeless people are referred by St Mungo's.

We have enjoyed serving lunch on a Wednesday and chatting to the guests, who all appreciate a room, regular meals and conversation, and support to move on with their lives.

There are a number of volunteer vacancies for afternoons or evenings from 20th Dec to 1st Jan. Please ask Carol about dates if you could help.

Redland Park Fair Trade stall

Just to let you know there are now some fair trade Christmas cards on sale (£1 off the original price per pack) and Advent Calendars (with the real Christmas story) with a piece of chocolate each day, as well as the usual chocolate, toilet rolls, sustainable cleaning products, tea, coffee, biscuits, etc.

Future Events (Church in Society)

Church in Society are taking a back seat while we look forward to Advent and Christmas, but future events are hoped to be a Burns Night (end of January) as well as a bring and share lunch.

My Carbon Footprint

by Alison Hooper



In the July/August *Recorder*, Angus published his Carbon Footprint given by two different websites,

<https://footprint.wwf.org.uk/> and
<https://climate-calculator.climatehero.org/>

I tried the same carbon calculators but unfortunately my Carbon Footprint was much higher – 11.3 tonnes with Footprint and 8.8 tonnes with ClimateHero. I was very disappointed as I had been trying hard the past number of years to reduce my carbon footprint and yet I was well above the national average with respect to both footprint calculators. So I decided to drill down as to why my footprint was so high. This is what I found out.

1. Both sites take a broadbrush approach to domestic heating. So it assumed you use a certain amount of energy for a given size of house, which is then divided by the number of people to live there. So the carbon footprint from heating and energy usage will be much larger for single people living alone (by a factor of two as compared to couples and factors of three and more as compared to families). The sites are not sufficiently nuanced to take on board any energy efficiency measures you may have taken.
2. Long-haul flights are the worst for generating carbon. This is consistent across all carbon calculators. My carbon footprint due to one long-haul flight to Australia is anything from 4 tonnes to 6.62 tonnes. This figure dwarfs the carbon I generate from all other means – house, other travel, consumption. How this figure is reached? Research shows that in 1990 one passenger-kilometre would emit 357 grams of CO₂. By 2019, this had more than halved to 157 grams. So the aviation industry is making progress but unfortunately demand has quadrupled in the same period, which means that the aviation sector's carbon footprint is growing and has actually doubled over the period 1990-2019.

In order to get a more accurate picture of my carbon footprint, I used the calculator at www.carbonfootprint.com This site lets you use actual figures from your utilities bill and helps you see where you should place

your efforts to reduce your footprint. Using this site, I found my carbon generation in tonnes per annum is:

House 2.33 2.01 tonnes from gas, 0.32 from electricity

Travel Flights 6.94 Lisbon return 0.32 London-Brisbane return 6.62

Travel Car 0.91 Based on 4000 miles per annum in a small petrol car

Travel Bus/rail 0.07 One return rail journey Bristol to Glasgow and local bus journeys in and around Bristol

The Carbon Footprint calculator makes it clear where one should put one's effort to reduce carbon emissions. For me, it's clear that I should cut down on an annual trip to Australia to see my son and family. Difficult decisions, but in the meantime I will carbon offset for my next flight to Australia in 2025, limit long haul flights to at most one per year and replace domestic and short-haul flights with bus and rail travel where possible. It's a start.

Summary from the RP Church Meeting, 17th November 2024 *from Les Fry*

27 members agreed the September minutes and shared updated news about twelve other friends, aware that several are currently experiencing hard medical times.

Dougie highlighted some key elements of the Church Life review, emphasising the impact of the new moderator David Downing, He recommended acceptance of the Synod's offer to purchase manses and taking responsibility off local churches for physical care and maintenance. Malcolm pointed out the need to cherish our premises and use them fully for our mission to share God's good news at the heart of our community. Carol distributed voting forms for next year's church charities as well as updating us on the Bristol Churches Winter Night Shelter. Derek will open our Warmshare provision on Thursday 21st, and Alison confirmed the Redland Park target of becoming a carbon neutral church.

Positive news from the Organ group, Broad Plain, 77th Scouts and Junior Church helped to prepare us for the excitement of the Christmas programme.

November thoughts and a Sixteen Year Pilgrimage by Martyn Steel

My apologies to Martyn; he submitted this in plenty of time for the November edition but there wasn't enough space to fit it in. The print version has to be a multiple of 4 pages long! But if you read this as soon as it comes out, it will still be November...

'Autumn' a poem by John Keats, describes that time of year as a season of mists and mellow fruitfulness. It includes November, a month many folk find rather bleak and dreary. The clocks had been turned back a week or so before its entry. There is a palpable yearning by those for the winter solstice to pass and to see the light of day grow incrementally longer.

There are some of us though who rather like November. It may seem incredulous to most that this could be so. I do know of several who like to escape the light mornings and long evenings of the summer months, with all their heat and humidity. We enjoy getting up in the dark and seeing the darkness of late afternoons in a cosy, comforting way. Then there's the mist, fog and the cold – wonderful. I like the atmosphere of the month. It is a time when I can reflect on lighter times in the year and get to grips with projects which have lain dormant for far too long.

November is also a musical month. St Cecilia, the patron saint of music is commemorated in both Anglican and Catholic communities and by musicians of other denominations and none, on November 22nd and there will be many musical events around the country marking the occasion. I thought a suitable article from the organist might be appropriate:

In 2008 I started a musical 'pilgrimage' to cover the 8 places where Johann Sebastian Bach (1685-1750) lived and worked. All in Germany: Eisenach, Ohrdruf, Lüneburg, Arnstadt, Mühlhausen, Weimar, Köthen and Leipzig.



The Bachhaus in Eisenach

After fifteen years I had covered seven of the eight. Finally, I was staying in Berlin in August this year and got on the train to Köthen. The last town on my list.

Two places of the eight stand out as particularly poignant. In Leipzig, where Bach spent the last 27 years of his life,



St Agnes in Köthen

I was able to stand next to his grave in the chancel of the Thomaskirche.

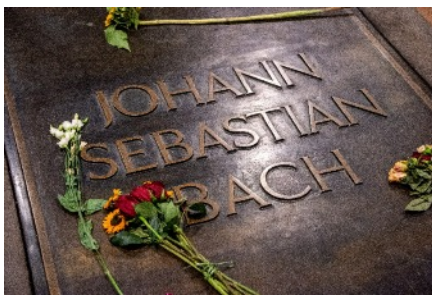
The second was in the St Agnes church, Köthen, where Bach worshipped for six years (he was composer to the local duke and musical duties were in the ducal castle and not in the church). I met a very friendly man in the church and in very mangled German said I was there to complete a pilgrimage and mentioned the word 'organ' a lot. He got the hint and asked me if I would like to play. It was a wonderful opportunity to play in the church where Bach and his family had spent six years of their lives each Sunday.

One of my November projects (underway) is to produce a book of this pilgrimage which I can share with like-minded people.

Following in the steps of this great musical genius, also referred to as the fifth evangelist and God's composer, has been in some ways, a spiritual experience not unlike that of other pilgrims visiting Santiago de Compostella in Spain or the shrine of St Cuthbert in Durham Cathedral.

I heard a joke recently: Mozart dies and goes to heaven. God says to him, 'Mozart, I want you to conduct the angelic chorus and orchestra'. Mozart, a little perplexed, modestly replies, 'But what about Bach?' 'I **am** Bach' came the reply.

Happy November!
Martyn



The final resting place in the Thomaskirche, Leipzig

Know Your Elder

Martyn Steel at Redland Park

Where did you grow up?

I was born in Southmead hospital and spent my youth in north Bristol. My 'gap' year as it is now called was in St Paul's, not the cathedral but the central district where I was a Clerical Officer in the DHSS (Department of Health and Social Security). My goodness, what a ghastly job, but I certainly matured very quickly! After studying teacher training in Fishponds (then part of the University) I reluctantly had to leave the city due to the lack of positions available for newly qualified teachers. What a different situation today! I applied all over the country and ended up teaching in London, escaping back to Bristol 45 years later!



A memory from your youth?

My parents were nominal Christians, but were always encouraging me to explore. My Christian journey started by accident or was it? I was cycling near my home and went into an open Compton Greenfield Church, a lovely Norman gem of a building hidden behind Easter Compton village. I wandered into the vestry and on the robe hooks saw the name of my music teacher at school. I was already interested in singing at school and he invited me to join the choir and so I did. I later became the organist at All Saints' at 16, my first post.

Who/what led you to faith in Christ?

It was through my love of church music that my faith flourished and relationship with God grew and continues to grow. Prayer has always been difficult. Beautiful scenery, sacred music and works of art for me can be prayers in themselves; spiritual moments bringing me closer to God than any words could do, important as they are.

Why did you start worshipping at RP?

My last church was Muswell Hill URC, London and where I was organist. When I told one of the members (a former minister) that I was heading southwest she told me to get in contact with Dougie, a colleague she had trained with. Her words were, 'You can't go wrong there!' So here I am. Redland Park is about as far away from my home in Hengrove that could be in Bristol, but in London journey-length terms it's just a stone's throw!

Something particularly good about living in Bristol?

I enjoy living in Bristol. My family are here. Not only I am a native so know it well but it is a microcosm of the capital where I spent most of my working life. There is an intimate and comforting feel here due its size compared to the metropolis I experienced for so long.

Something you really value about RP?

Redland Park is a place where it seems I was meant to be. Soon after coming to the church I was in position as organist. A happy co-incidence? From the very moment I crossed the threshold I was welcomed warmly. Redland Park is a family: a place where I have enjoyed and continue to enjoy the support, friendship and fellowship of the congregation, Dougie, Les and the elders.

A Rocha UK's Easy Eco Tips for December & January

Celebrate a Greener Christmas. Find ways to make your Christmas festivities both a joyous celebration of Christ's coming and environmentally conscious.

Explore A Rocha UK's twelve tips for a greener Christmas at

<https://arocha.org.uk/our-twelve-tips-for-a-greener-christmas/>

There are more ideas and things to think about at

<https://arocha.org.uk/journeying-towards-a-zero-waste-christmas/>

Keeping up with the vicar, part 150

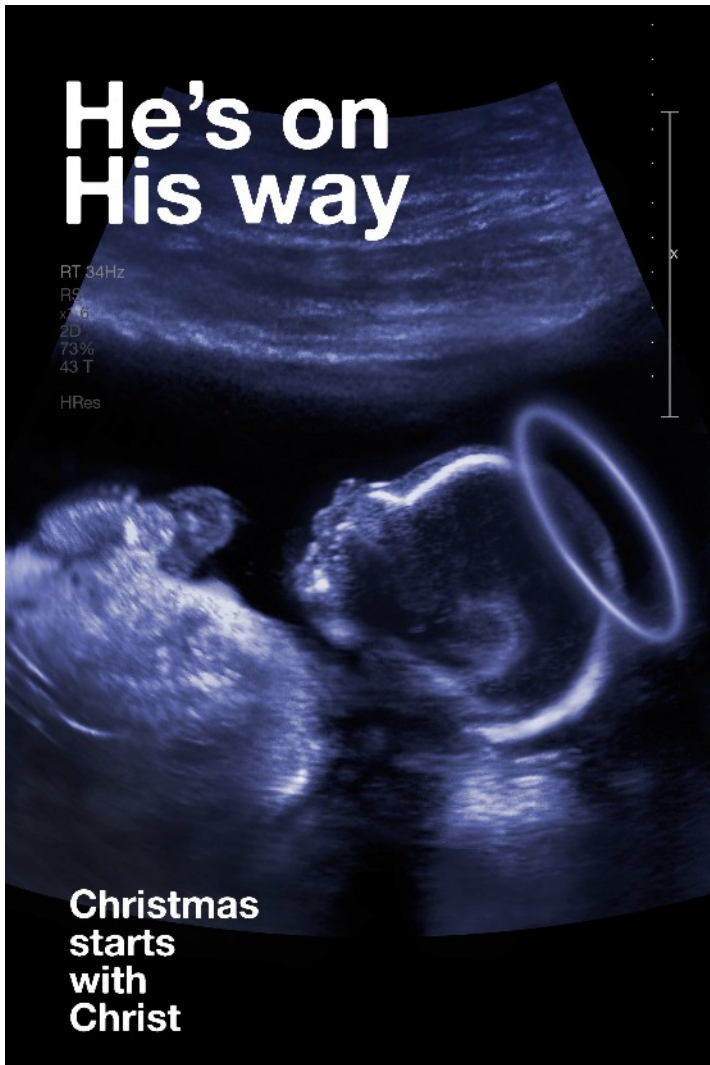
Here are the lectionary readings for December and January. Happy Christmas and New Year. As we move into Advent, it's a new church year - year C in the lectionary cycle - which means Luke will be the gospel in focus for the coming year. Luke's gospel is in some ways the most politically radical, emphasising that this is "good news for the poor". Luke highlights God's grace in bringing in those on the margins: the shepherds are the first to come to Jesus, the despised Samaritan (spoiler alert for July 13th) shows what a being a neighbour really means, and women are praised for their loyalty and faith (see the start of chapter 8 - better do it now as the Lectionary misses this bit out altogether). Through Advent we learn from Zechariah and Mary's encounters with angels just what sort of Messiah to expect as extra gospel readings replace the psalm on a couple of Sundays.

In January we see other key aspects of Luke's gospel. Matthew wrote more for a Jewish audience and Mark seems desperate just to get the story out as fast as possible. Luke contains virtually all of Mark's gospel, often word for word, plus a lot more. But it seems Luke is going for the wider group, "the Gentiles", and with his sequel, the Acts of the Apostles, takes the story on eventually to Rome. This two part work, Luke-Acts, make up just over a quarter of the New Testament. Luke is also keen to show how the Holy Spirit is active - sixteen mentions in our readings up till the start of February. Let's pray that we can be as open to the Spirit as the characters we read about.

Many preachers use the lectionary readings as a basis for their preaching. The suggestion is to read them sometime in the week before Sunday worship so that if they are the ones used, it might help you get a bit more from the sermon.

	OT	Psalm (usually)	Gospel	NT
Dec 1 st	Jer 33:14-16	25:1-10	Luke 21:25-36	1 Thess 3:9-13
Advent 1				
8 th	Malachi 3:1-4	Luke 1:68-79	Luke 3:1-6	Phil 1:3-11
Advent 2				
15 th	Zeph 3:14-20	Isaiah 12:2-6	Luke 3:7-18	Phil 4:4-7
Advent 3				

22 nd	Micah 5:2-5a	Luke 1:46b-55	Luke 1:39-55	Hebrews 10:5-10
Advent 4				
29 th	1 Sam 2:18-20,26	148	Luke 2:41-52	Col 3:12-17
Jan 5 th	Jer 31:7-14	147:12-20	John 1:1-18	Eph 1: 3-14
12 th	Isaiah 43:1-7	29	Lk 3:15-17, 21-22	Acts 8:14-17
19 th	Isaiah 62:1-5	36:5-10	John 2:1-11	1 Cor 12:1-11
26 th	Neh 8:1-3, 5-6, 8-10	19	Luke 4:14-21	1 Cor 12:12-31a



Deadline for contributions for the February *Recorder* is **15th January**.

Please send your contributions to the editor, Angus Gregson
email: angus.gregson@btinternet.com
or by post to the *Recorder* at the Church address at the bottom of this page.

Many thanks to everyone who contributed to this edition and have *already* contributed to the next.

Minister: Rev. Douglas Burnett
0117 330 9910
douglasburnett@wwmail.co.uk

Secretary: Les Fry
07769 253279
lesjfry@hotmail.com

The *Recorder* is the monthly magazine of
Redland Park *and* New Brunswick
United Reformed Church, United Reformed Church,
Whiteladies Road, Wigton Crescent,
Redland, Southmead,
Bristol, Bristol,
BS6 6SA BS10 6DY
redlandparkurc@gmail.com newbrunswickurc@gmail.com